

DRAWING NUMBER
28-12

DRAWING NUMBER

DRAWING NUMBER

DRAWING NUMBER

12/82

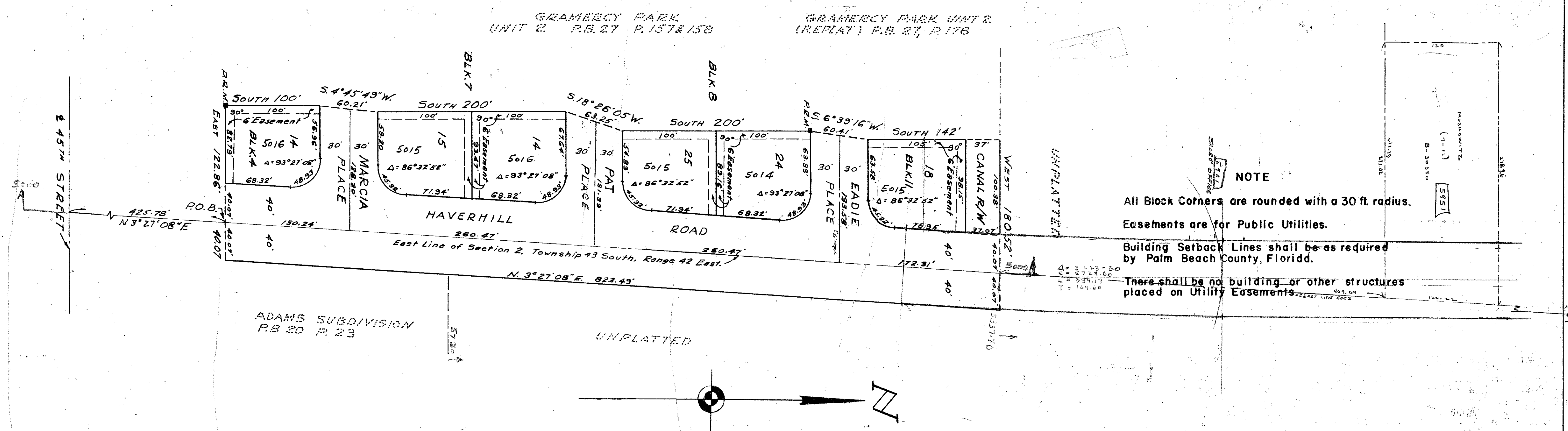
12

12/82

PLAT OF GRAMERCY PARK, UNIT 3, IN SECTIONS 1 & 2 TWP. 43 S., RGE. 42 E. PALM BEACH COUNTY, FLORIDA

INCLUDING A REPLAT OF PART OF THE WEST 40 FT. OF TRACT 7, ADAMS SUBDIVISION
RECORDED IN PLAT BOOK 20, PAGE 23, PUBLIC RECORDS OF PALM BEACH COUNTY, FLORIDA

STATE OF FLORIDA
COUNTY OF PALM BEACH
This Plat was filed for records at 4:25 P.M.
April 18th 1964
1964
88
JAMES D. CARLTON, Inc.
Palm Beach, Florida



NOTE
All Block Corners are rounded with a 30 ft. radius.
Easements are for Public Utilities.
Building Setback Lines shall be as required by Palm Beach County, Florida.
There shall be no building or other structures placed on Utility Easements.

STATE OF FLORIDA
COUNTY OF PALM BEACH ^{SS}
KNOW ALL MEN BY THESE PRESENTS, that GOLDCOAST BUILDERS INC. a Florida Corporation, the owner of the tract of land lying and being in the West 40 feet of Tract 7, ADAMS SUBDIVISION, recorded in Plat Book 20, page 23, Palm Beach County Public Records, in Section 1, Township 43 South, Range 42 East, and the Northeast Quarter of Section 2, Township 43 South, Range 42 East, Palm Beach County, Florida, shown hereon as GRAMERCY PARK, UNIT 3, and more particularly described as follows, to wit:
Commencing at the intersection of the centerline of 45th Street with the East line of said Section 2; thence on an assumed bearing of North 3° 27' 08" East, along the East line of said Section 2, a distance of 425.78 feet to the Point of Beginning; thence due East, a distance of 40.07 feet; thence North 3° 27' 08" East, a distance of 823.49 feet; thence due West, a distance of 180.52 feet; thence due South, a distance of 142 feet; thence South 6° 39' 16" West, a distance of 60.41 feet; thence due South, a distance of 200 feet; thence South 18° 26' 05" West, a distance of 63.25 feet; thence due South, a distance of 200 feet; thence South 4° 45' 49" West, a distance of 60.21 feet; thence due South, a distance of 100 feet; thence due East, a distance of 122.86 feet to the Point of Beginning.
has caused the same to be surveyed and platted as shown hereon, and does hereby dedicate to the perpetual use of the public, as public highways, the streets shown hereon, and the use of the Easements for the construction and maintenance of Public Utilities and/or Drainage purposes.
IN WITNESS WHEREOF, the said Corporation has caused these presents to be signed by its President and attested by its Secretary and its corporate seal affixed hereto, by and with the authority of its Board of Directors, this 3rd day of APRIL A.D. 1964
GOLDCOAST BUILDERS INC.

STATE OF FLORIDA
COUNTY OF PALM BEACH ^{SS}
I HEREBY CERTIFY that on this day personally appeared before me, an officer duly authorized to administer oaths and take acknowledgements, NATHAN ADLER and LOUIS F. ZEHNLE, President and Secretary, respectively, of GOLDCOAST BUILDERS INC. to me well known and known to me to be the individuals described in, and who executed the foregoing dedication, and they acknowledged before me that they executed the same as such officers of said Corporation by and with the authority of its Board of Directors for the purposes therein expressed, and that their act and deed was the act and deed of said Corporation.
WITNESS my hand and official seal at West Palm Beach, County of Palm Beach and State of Florida, this 3rd day of APRIL A.D. 1964.

STATE OF FLORIDA
COUNTY OF PALM BEACH ^{SS}
I HEREBY CERTIFY that the plat shown hereon is a true and correct representation of a survey, made under my direction, of the hereon described property, and that said survey is accurate to the best of my knowledge and belief, and that permanent reference monuments (P.R.M.) have been placed as required by law.
Raymond R. Vaughn
Registered Land Surveyor
Florida Certificate No. 1811
Subscribed and sworn before me this 3rd day of April A.D. 1964
 Evelyn G. Carlton
Notary Public
My Commission expires March 6, 1968

My Commission expires March 6, 1968
Approved 18 May A.D. 1964
BOARD OF COUNTY COMMISSIONERS

Attest Louis F. Zehnle
Secretary
By Nathan Adler
President

By Edward Paulclow
CHAIRMAN
By W. J. Hatt
COUNTY ENGINEER

1000-205
JAMES D. CARLTON INC.
ENGINEERS & SURVEYORS
UNIT NO. 3
GRAMERCY PARK
SCALE 1" = 60'
DATE: APRIL 1964

12/82

28/12